

## Covamat & Eromat Installation Instructions

### General Applications

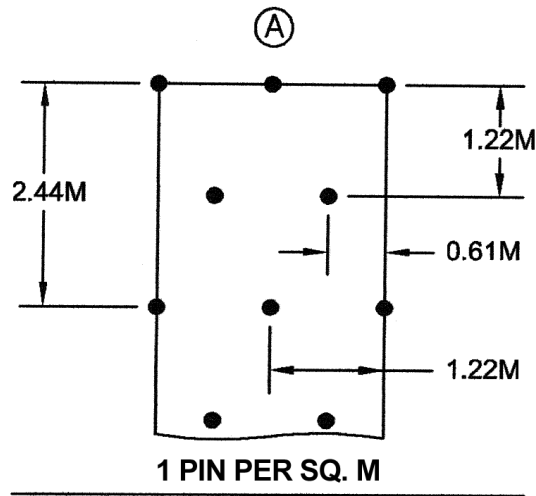
- The mats to be laid should be stored in cool, dry conditions and laid within 10 days of delivery - premature seed germination might otherwise result with seeded mats.
- Prepare the soil by raking the top 25mm- 50mm surface layer to a uniform even finish, incorporating where specified pre-seeding fertilizer or soil improver.
- With unseeded mats, where specified, apply at this stage the agreed seed mixture directly to the prepared soil.
- Dig the 150mm “V” trench at the top of the bank. See diagram “A”.
- Carefully roll out the mats (PAPER SIDE DOWN for seeded mats) ensuring close contact with the prepared ground. Pin the mat in the “V” trench and backfill with soil.
- Pin the remaining matting as specified per relevant pinning pattern, A, B, or C. (See overleaf)
- To improve ground contact and seed germination thinly cast soil on matting. 5mm MAX.
- Cover all the outside edges of the Greenfix application with soil.

### Ditch & Channel Linings

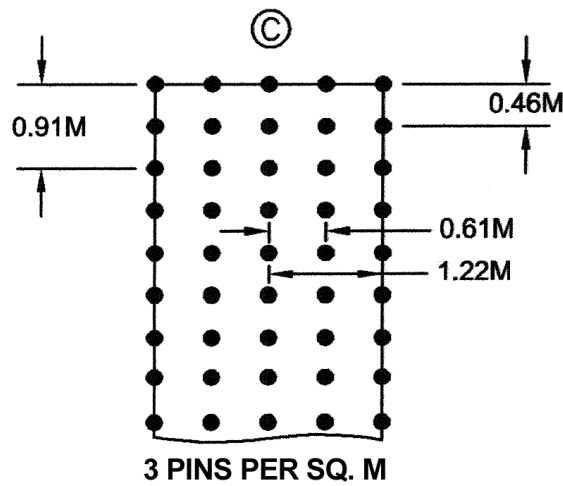
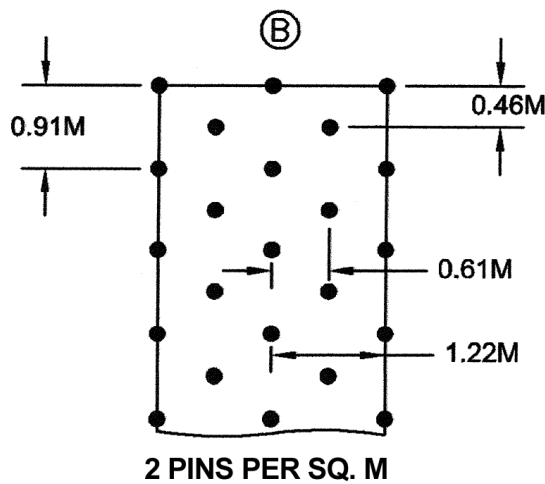
- Note the steps 1- 8 of General Applications.
- For the arrangement of the mats refer to the diagram overleaf and follow the steps below.
- Upstream ends of mats are to be buried in 300mm “V” trench and pinned 150mm apart. (Figure B)
- Roll the mats out along the length of the ditch, beginning in the invert and working up the sides, overlapping the end joints in the direction of flow by at least 100mm, and pin at 150mm centres.
- Proceed by overlapping the length of the next mat up the ditch over the lower mat by at least 100mm, and pin according to pinning pattern
- Extend the mats beyond the crest of the channel by approximately 300mm and soil or trench along the entire length.

**OR** roll out the mats across the invert, using a complete length of matting from shoulder to shoulder. Trench in the mats as per the slope applications and overlap the edges in a “shingle” effect away from the direction of flow and pin as per relevant pinning pattern.

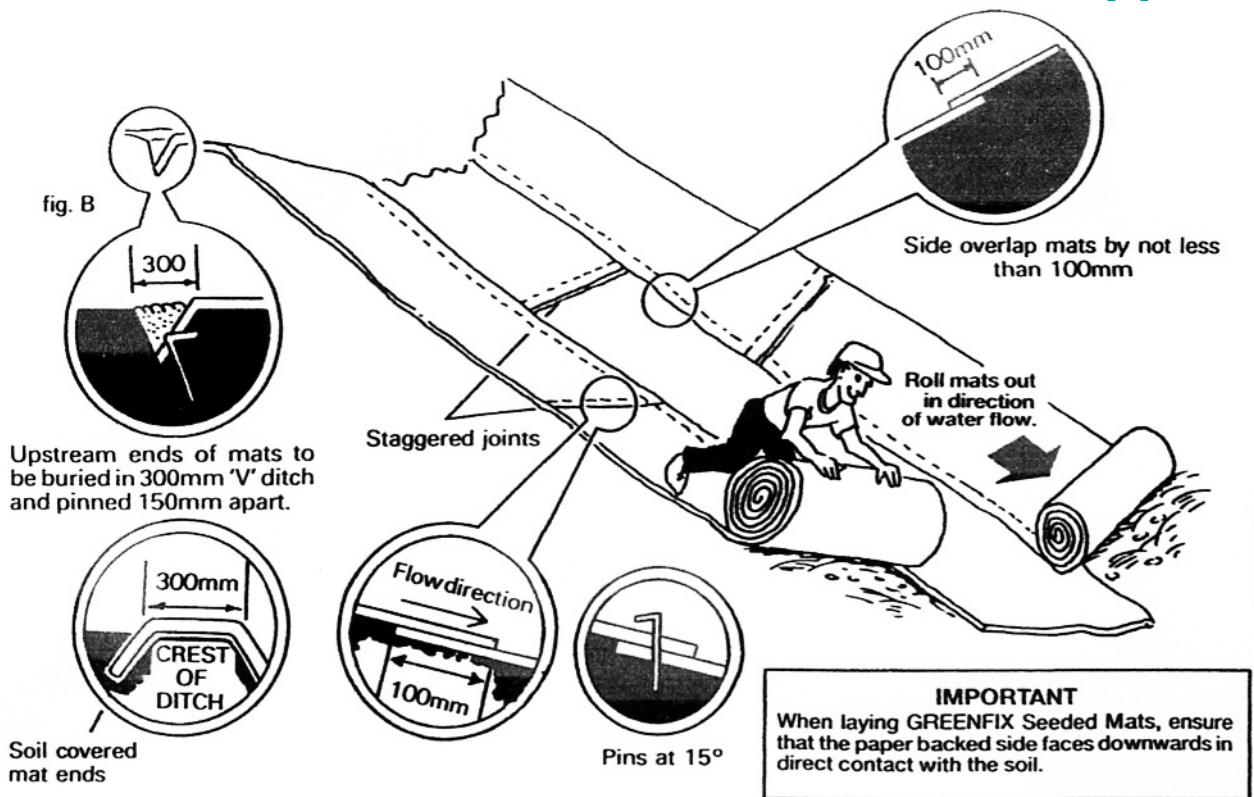
## Pinning Pattern for 2.4m wide rolls



- A – up to 15 degrees
- B – up to 30 degrees
- C – over 30 degrees and water courses



## Covamat & Eromat Ditch/Channel Applications



## Covamat & Eromat Slope Applications

The edges of the mats should be overlapped by 100mm. Pin the mats down as per relevant pinning pattern.

