

Mulchmat Installation Instructions

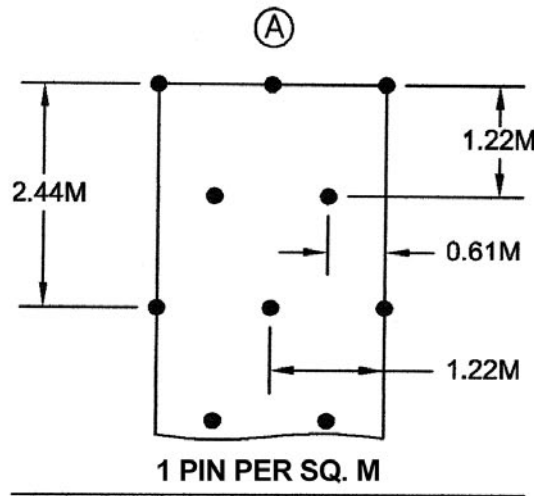
For Slopes and Flat Applications

- Mats should be stored in a dry place.
- Existing vegetation should be removed as far as possible.
- The ground should be as even as possible.
- For slope applications dig the 150mm “V” trench at the top of the bank. See diagram “A”. Pin the mat at 500mm centres in the “V” trench and back fill with soil.
- Roll out the mats, taking care to overlap all joints by 150mm, thus ensuring no daylight penetration.
- Pin the mats down using the pins supplied according to pinning pattern.
- Cover all outside edges of the Mulchmat application with soil.
- Planting can be carried out by positioning plants at the seam joints or by making cross-cut incisions in the mat. Care should be taken to ensure that the mat is snugly positioned around the plant - pinning down is advised.

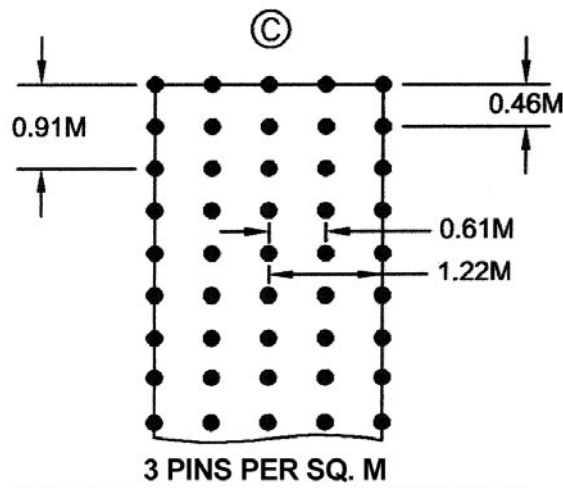
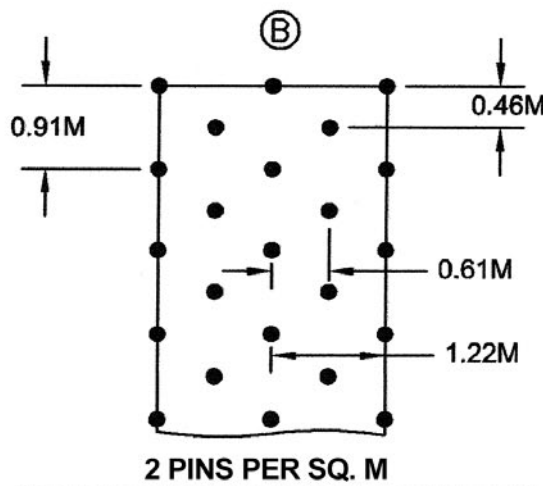
For Spat Applications

Spats are made to size required. Sizes available are 60cm, 80cm and 120cm squares with slit to centre. Soil or entrench edges of spats and pin down to secure.

Pinning Pattern for 2.4m wide rolls

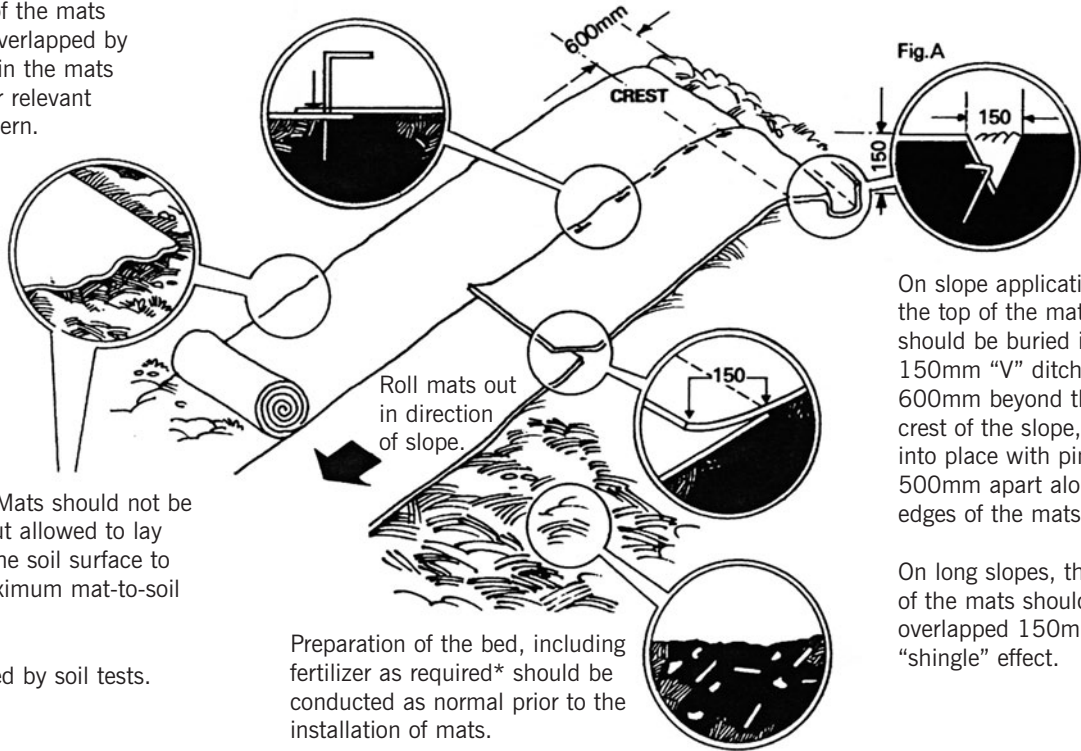


- A – up to 15 degrees
- B – up to 30 degrees
- C – over 30 degrees and water courses



Mulchmat Slope Applications

The edges of the mats should be overlapped by 150mm. Pin the mats down as per relevant pinning pattern.



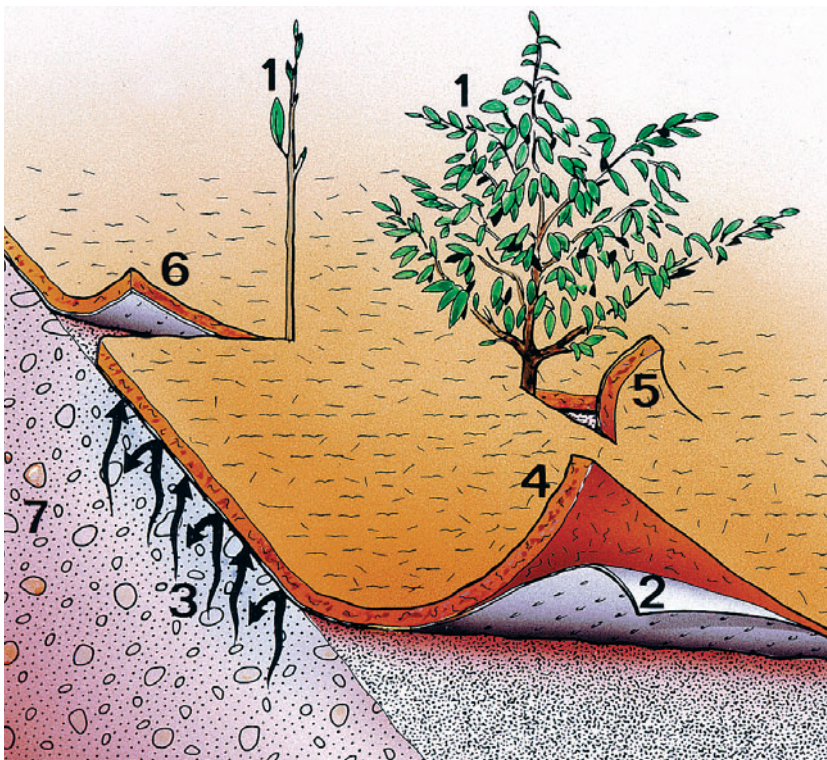
GREENFIX Mats should not be stretched but allowed to lay loosely on the soil surface to achieve maximum mat-to-soil contact.

*As indicated by soil tests.

Preparation of the bed, including fertilizer as required* should be conducted as normal prior to the installation of mats.

On slope applications, the top of the mats should be buried in a 150mm "V" ditch 600mm beyond the crest of the slope, pinned into place with pins 500mm apart along the edges of the mats.

On long slopes, the ends of the mats should be overlapped 150mm in a "shingle" effect.



All joints should be overlapped by 150mm to ensure no daylight penetration. Pin the mats down as per pinning pattern.

Roll mats out in direction of slope.

On slope applications, the top of the mats should be buried in a 150mm "V" ditch 600mm beyond the crest of the slope.

The ends of the mats should be overlapped 150mm in a "shingle" effect.